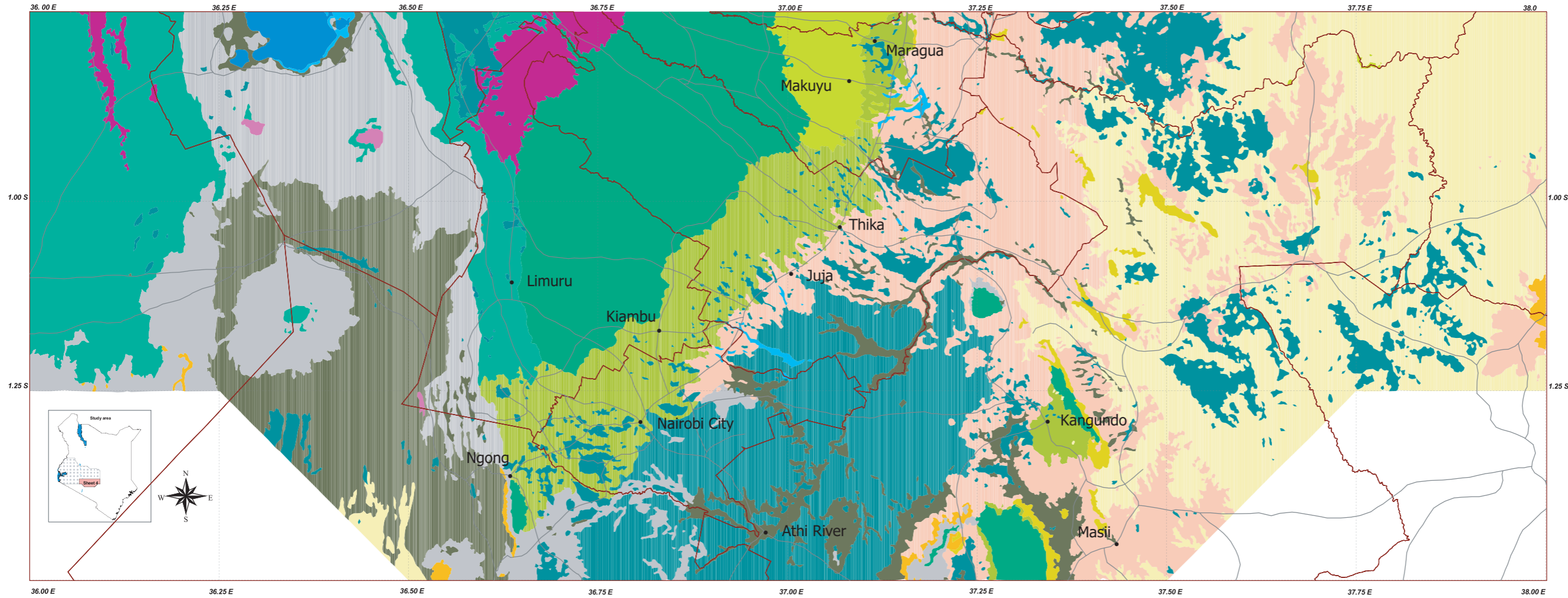


# Potential natural vegetation of south-western Kenya for selection of indigenous tree species



Authors: Roeland Kindt, Jens-Peter B Lillese, Paulo van Bruegel and Meshack Nyabenge

Published by World Agroforestry Centre (ICRAF), Nairobi, Kenya in 2005  
This map was compiled and prepared by ICRAF GIS Unit 2005. Final design was made by John Gikanga

Potential natural vegetation adapted from: Trapnell CG, Brunt MA and Birch WR. 1986. Kenya 1:250,000 Vegetation Sheet 4. Results of a vegetation - land use survey of south-western Kenya. British Government's Overseas Surveys Directorate, Ordnance Survey under the UK Government's Technical Co-operation Programme

District administrative boundaries generated from the national population database digitized and compiled by the Central Bureau of Statistics (CBS), Ministry of Finance and Planning, Nairobi, Kenya in 1999.

Main towns digitized from topographic maps sheets (1960-1976) compiled by the Smallholder Dairy Programme of the International Livestock Research Institute (ILRI), Nairobi, Kenya in 2000.

Road network digitized from topographic maps sheets (1960-1976) compiled by the Ministry of Public Works and Roads, Nairobi, Kenya in 1996.

Donors:  
Flemish Association for Development Cooperation and Technical Assistance (WVOB) through the Testing Options and Training Partners in Participatory Tree Domestication and Marketing in East Africa (TOTDOMEA) project at ICRAF  
Danish International Development Assistance (DANIDA) through support of the Improved Seed Systems for Agroforestry in African Countries (ISSAAC) project at ICRAF and Forest and Landscape (Denmark)



## Legend

- Towns
- ⚡ Roads
- ▭ District boundary
- Water
- Bare land
- Bamboo woodland and thicket
- Mountain scrubland and moorland
- Alpine
- Moist montane forest
- Dry montane forest
- Moist intermediate forest
- Dry intermediate forest
- Upland Acacia woodland, savanna and bushland
- Mixtures of broadleaved savanna and evergreen bushland
- Low Acacia woodland, bushland and thicket
- Dry Combretum savanna
- Moist Combretum-Terminalia savanna
- Evergreen and semi-evergreen bushland
- Semi-evergreen thickets
- Swamp and Papyrus
- Open grassland areas on soils with impeded drainage
- Acacia and allied vegetation on soils with impeded drainage